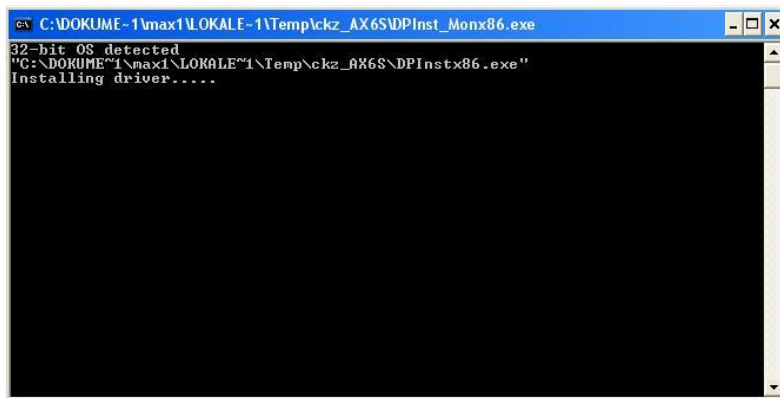
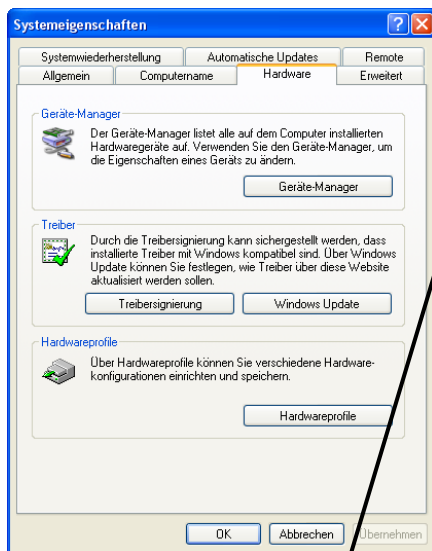


# Installationguide USB-Driver

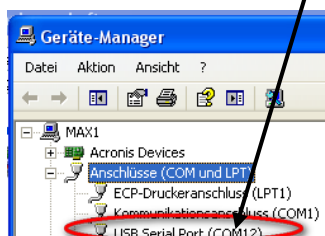
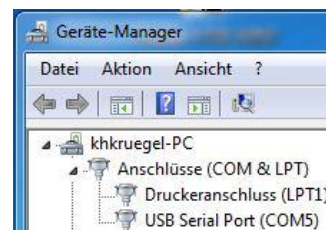
1. Connect your easyAIS-IS/easyTRX<sup>2</sup> mithilfe with the USB-cable contained in package to a free USB-Port of your PC / Laptop.
2. Press „abort“ when windows assistant is opening and ignore the failure declaration.
3. Insert the CD. Installation starts automatically. Following window will open.  
3.1 If your installation is not starting automatically go to workspace and press drive.



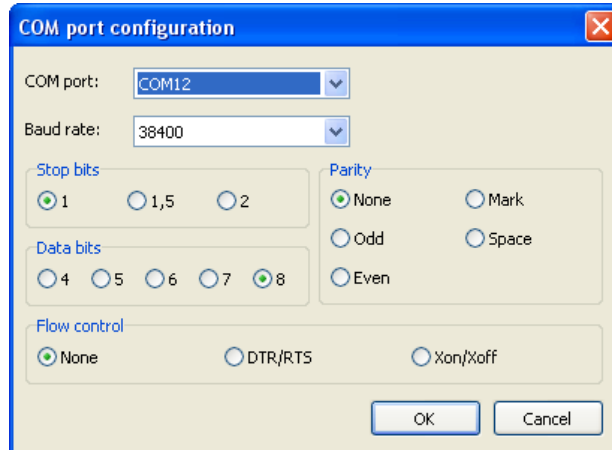
4. When installation has finished the windows assistant will start again. Press “abort” and ignore declaration.
5. On your key pad press the „windows“ + „brake“ button. The window „Systemproperties“ will open. Click on „Hardware“ and then on „Devicemanager“.
6. Now you can see the COM-Port ( for example COM12)



Systemproperties unter XP / Windows 7



7. **Following steps you have only to do by testing the connection between PC and device.** For this use the on CD contained Hyperterminal "Hyperterm\_WD.exe". Do a right click of your drive and then press open. In the Hyperterminalprogram click  and do following adjustments.



Our example shows COM12 like described on Devicemanager on Step 6

8. When you did everything right you can see messages like these. But please connect your antenna.

```
!AIVDM,1,1,,A,13ss<Q0P010jb<1L@ijGbgw`0<0?,0*69
!AIVDM,1,1,,B,139cAUS0010jIVNLB@W7H@sc04rL,0*0C
!AIVDM,1,1,,B,13WkpPhP0t0j:D6LERU0:Owb0<0@,0*77
!AIVDM,1,1,,B,13aDopPPO0Pj`TLASktMwwd20SG,0*0D
!AIVDM,1,1,,B,139IKSPPOw0j`iRL?T<VPgwd0000,0*60
!AIVDM,1,1,,B,139Mw7PPO10jbnjLAA2WA0wd0<0?,0*19
!AIVDM,1,1,,A,13`jftHP000j8i>LDi5o>gwf0<0;,0*45
```

9. Now close the „Hyperterm\_WD.exe“ and open your Navigationsoftware. There you have to select the right COM-Port. For example COM12. You also have to set baudrate to 38400.